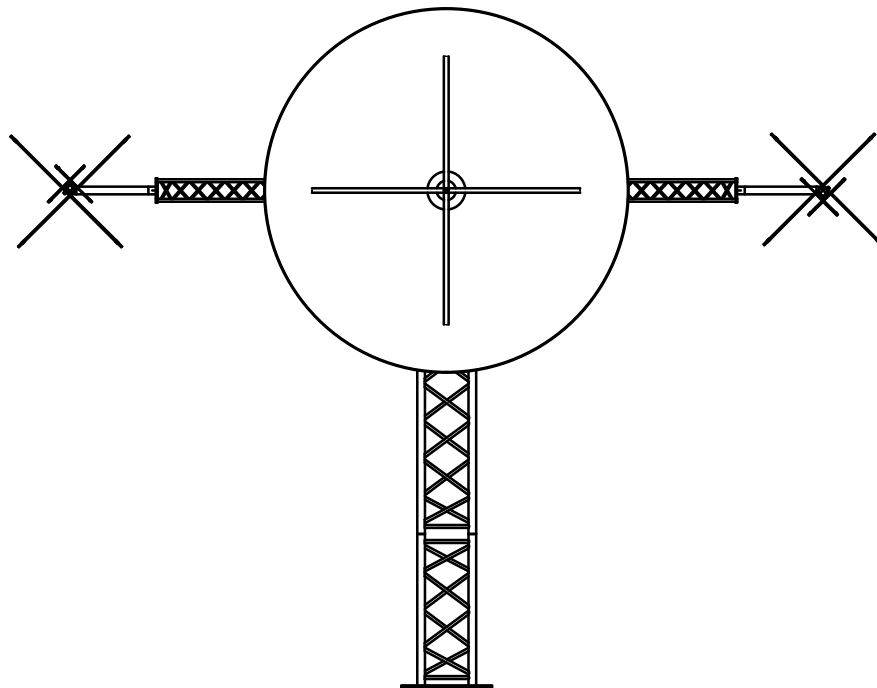
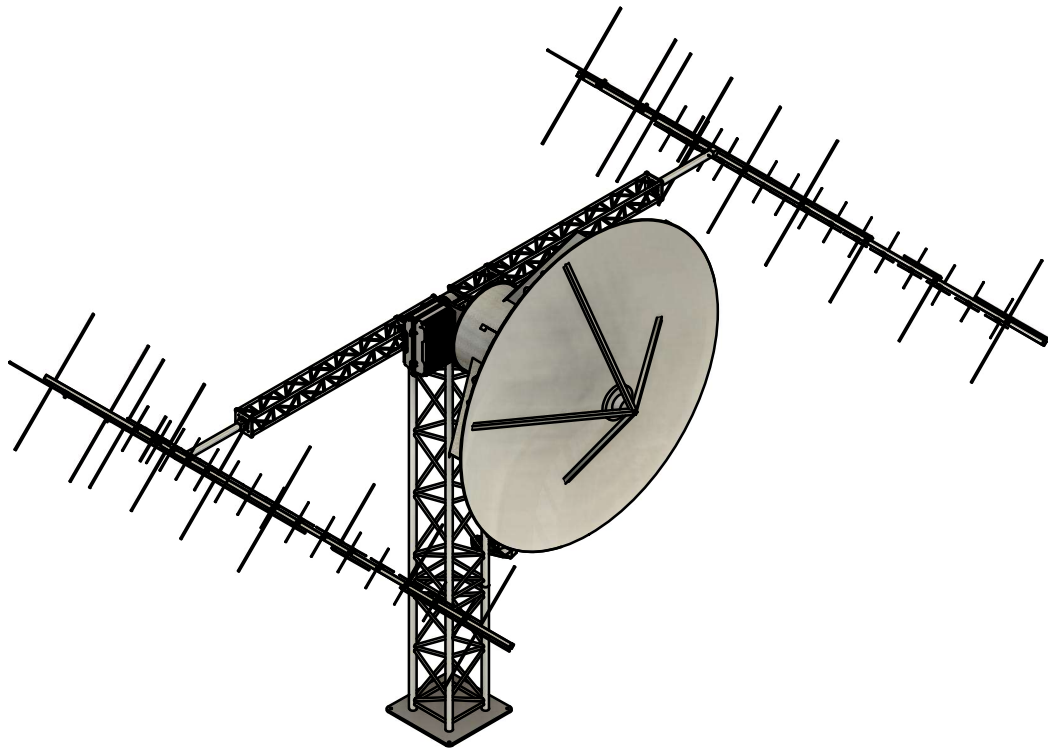
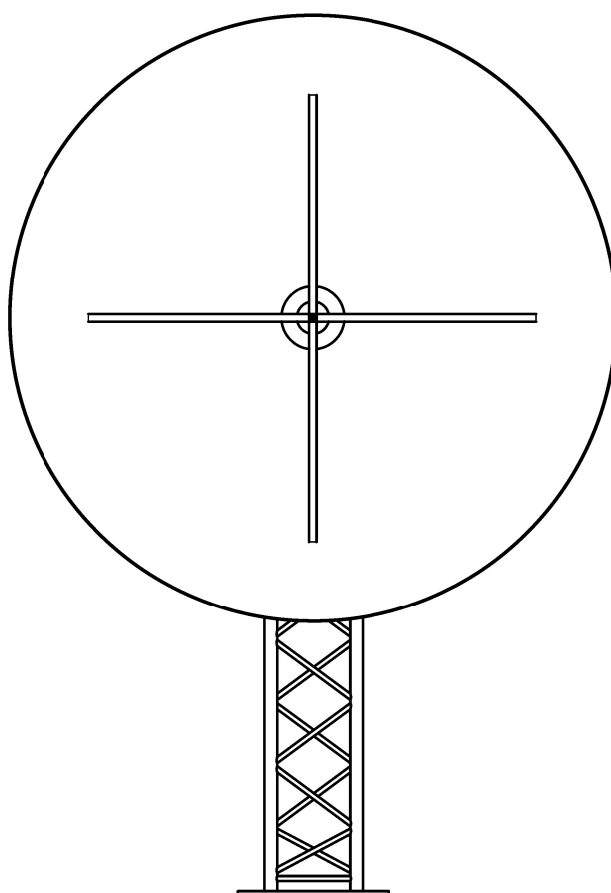
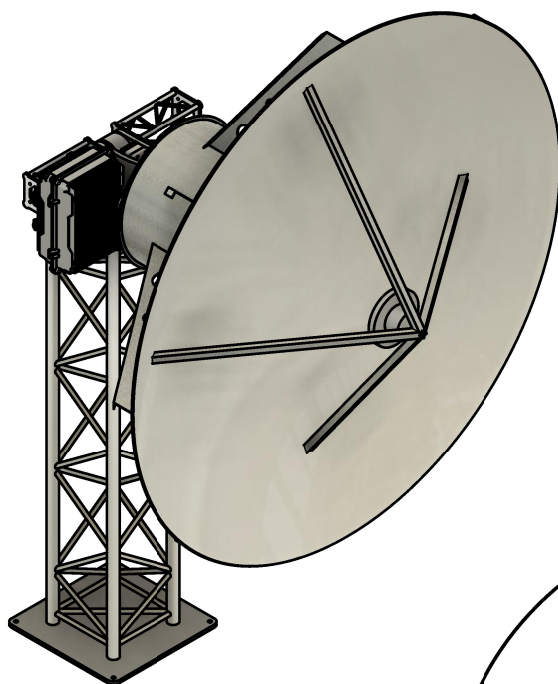


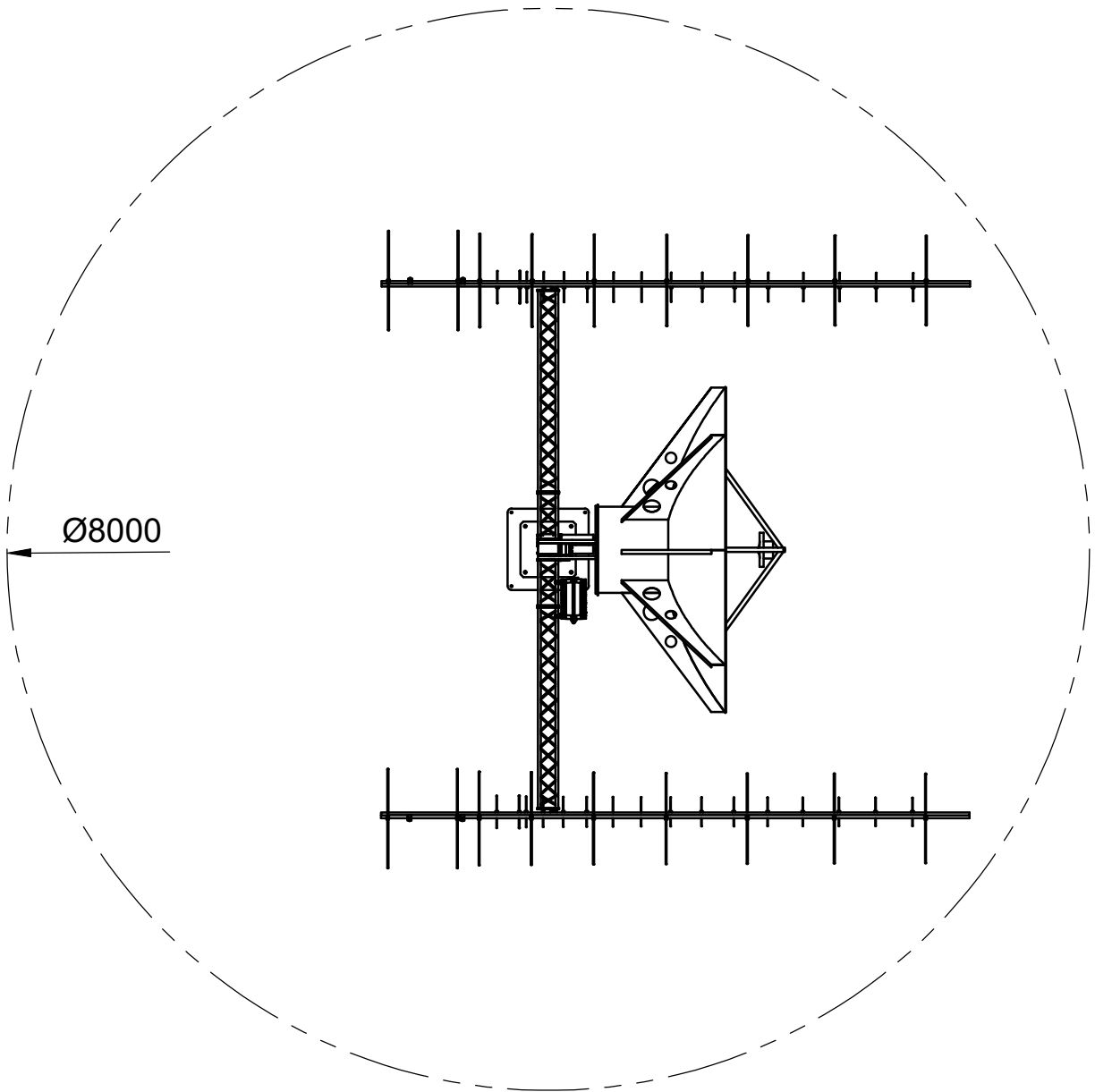
Dept.	Technical reference	Created by Adrelys	24/04/2024			Approved by
		Document type				Document status
		Title AGS3 Global view Quad antenna version				DWG No.
			Rev. 1	Date of issue	Sheet 1/12	



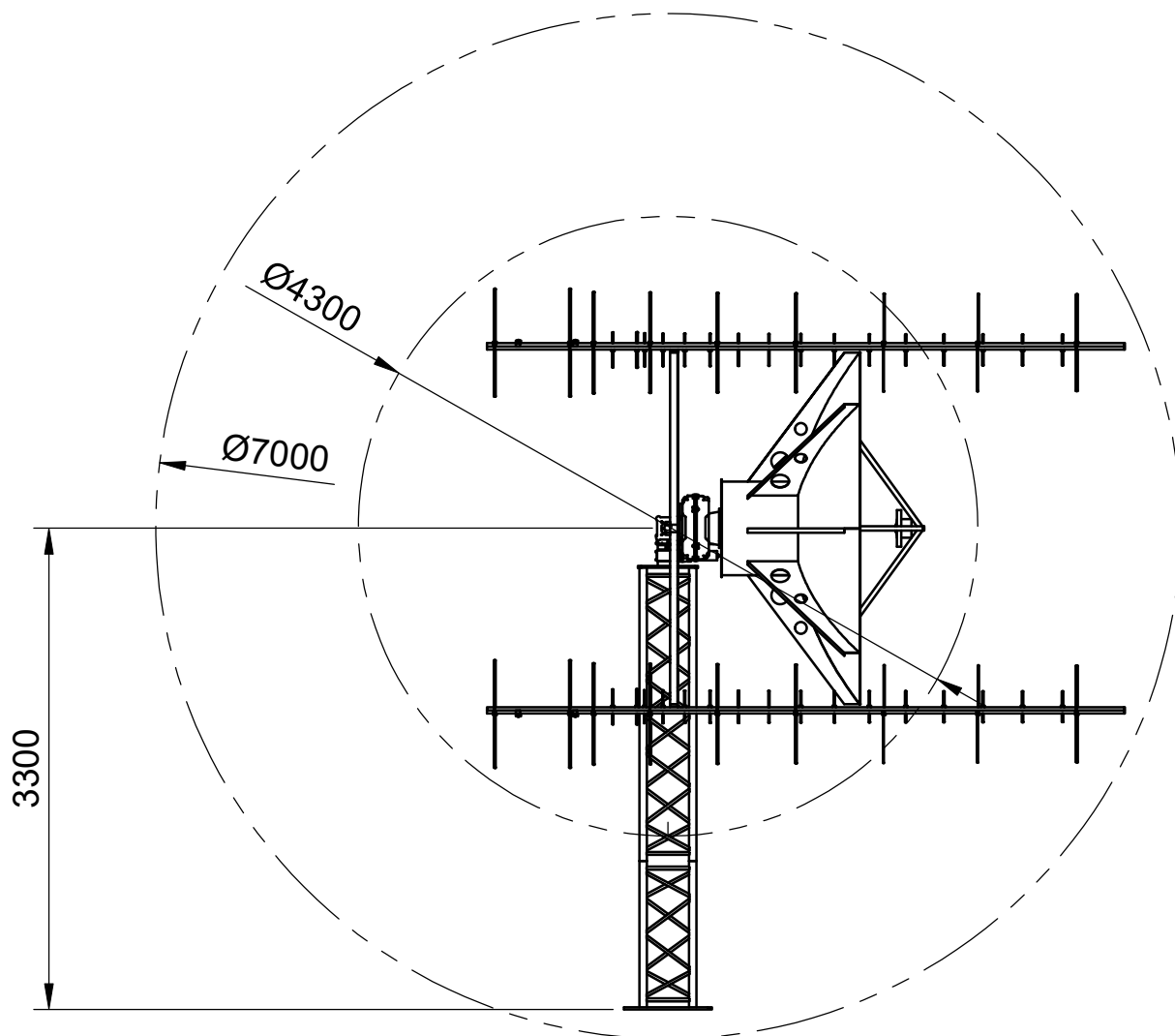
Dept.	Technical reference	Created by Adrelys	24/04/2024			Approved by
		Document type				Document status
		Title AGS3 Global view Dual antenna version				DWG No.
			Rev. 1	Date of issue	Sheet 2/12	



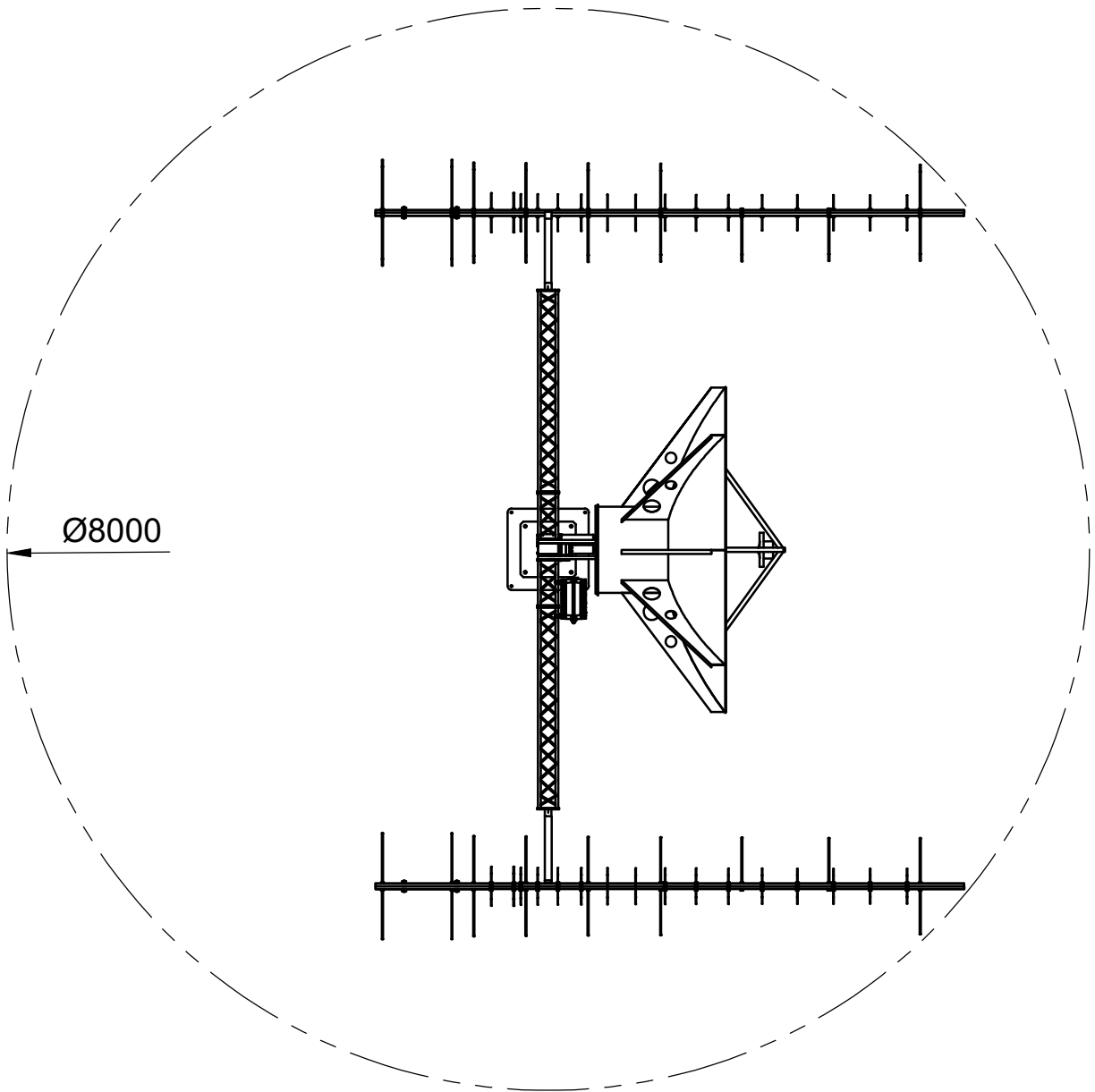
Dept.	Technical reference	Created by Adrelys	24/04/2024			Approved by		
		Document type			Document status			
		Title AGS3 Global view Without UHV-VHF			DWG No.			
					Rev. 1	Date of issue		Sheet 3/12



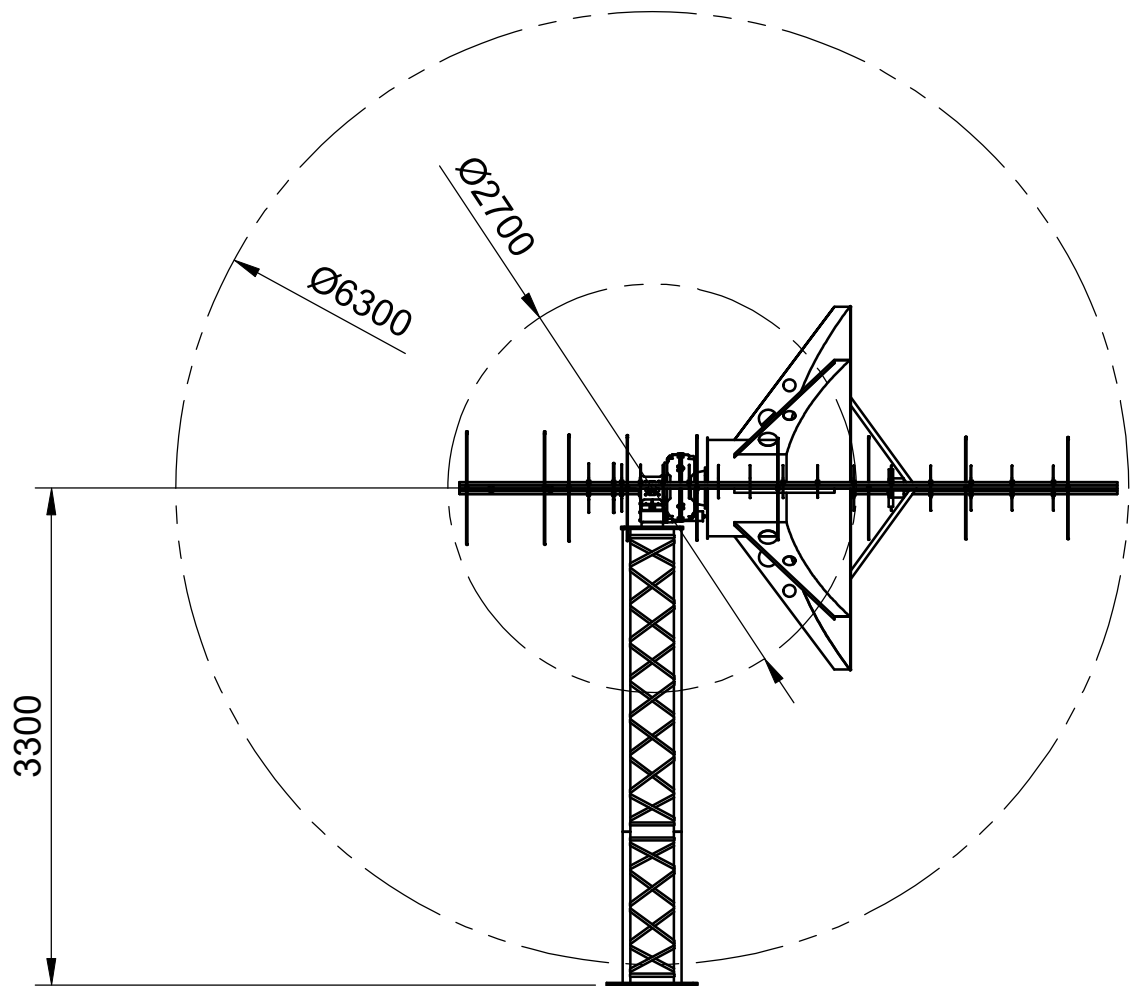
Dept.	Technical reference	Created by Adrelys	24/04/2024			Approved by
		Document type				Document status
		Title AGS3 Azimuth footprint Quad antenna version				DWG No.
			Rev. 1	Date of issue	Sheet 4/12	



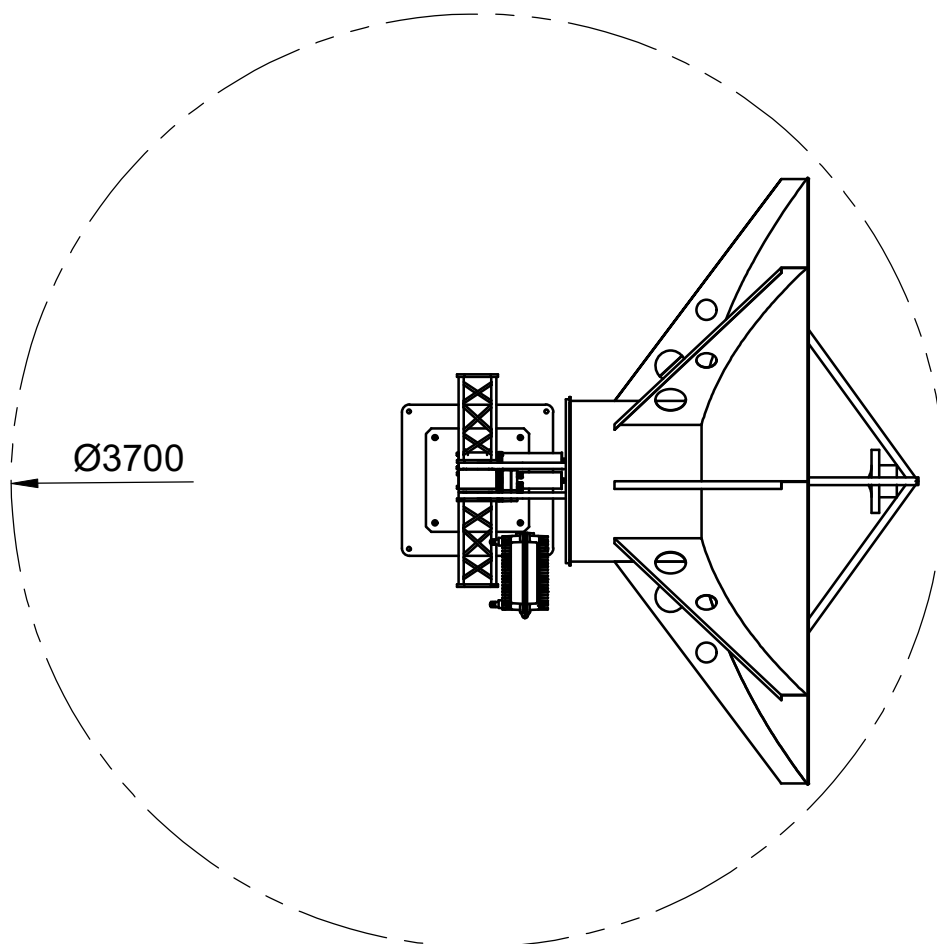
Dept.	Technical reference	Created by Adrelys	24/04/2024			Approved by
		Document type				Document status
		Title AGS3 Elevation footprint Quad antenna version				DWG No.
			Rev. 1	Date of issue	Sheet 5/12	



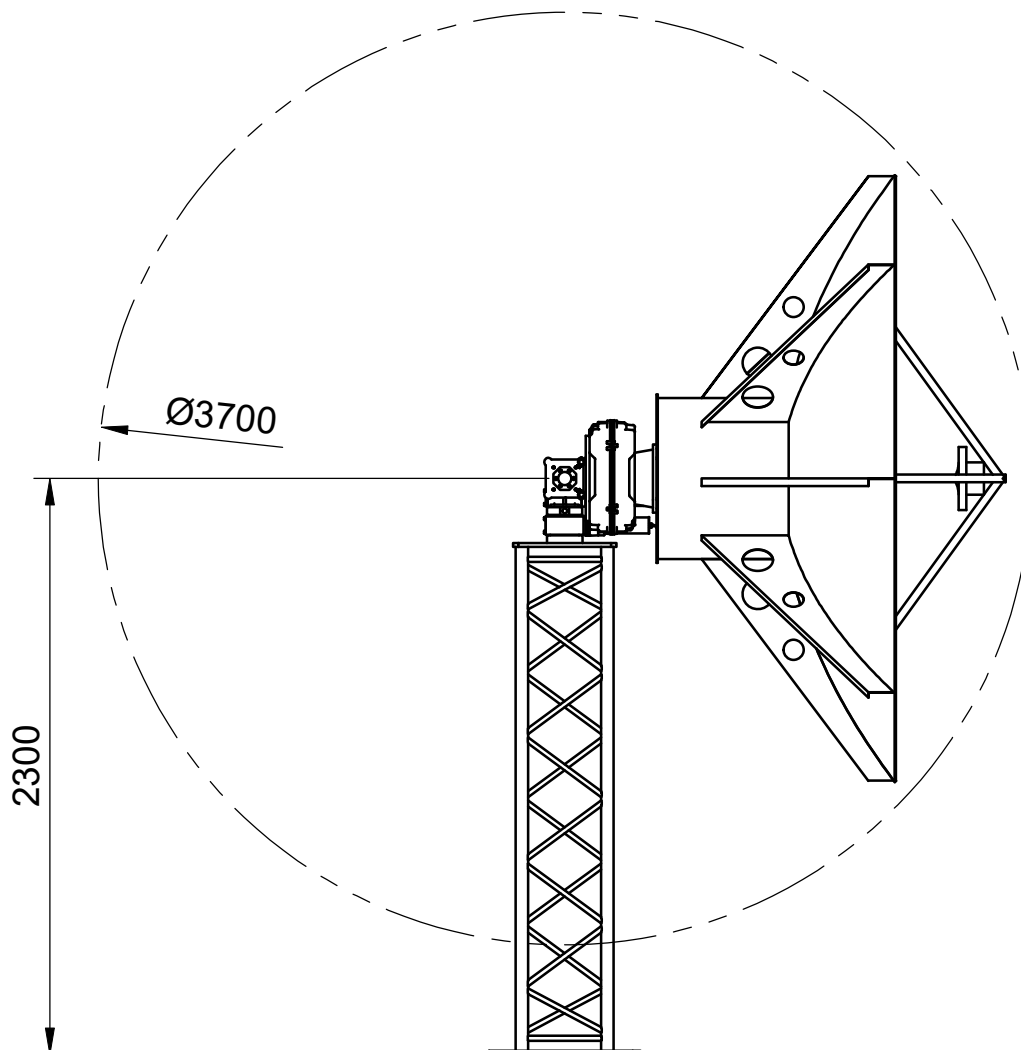
Dept.	Technical reference	Created by Adrelys	24/04/2024			Approved by
		Document type				Document status
		Title AGS3 Azimuth footprint Dual antenna version				DWG No.
			Rev. 1	Date of issue	Sheet 6/12	



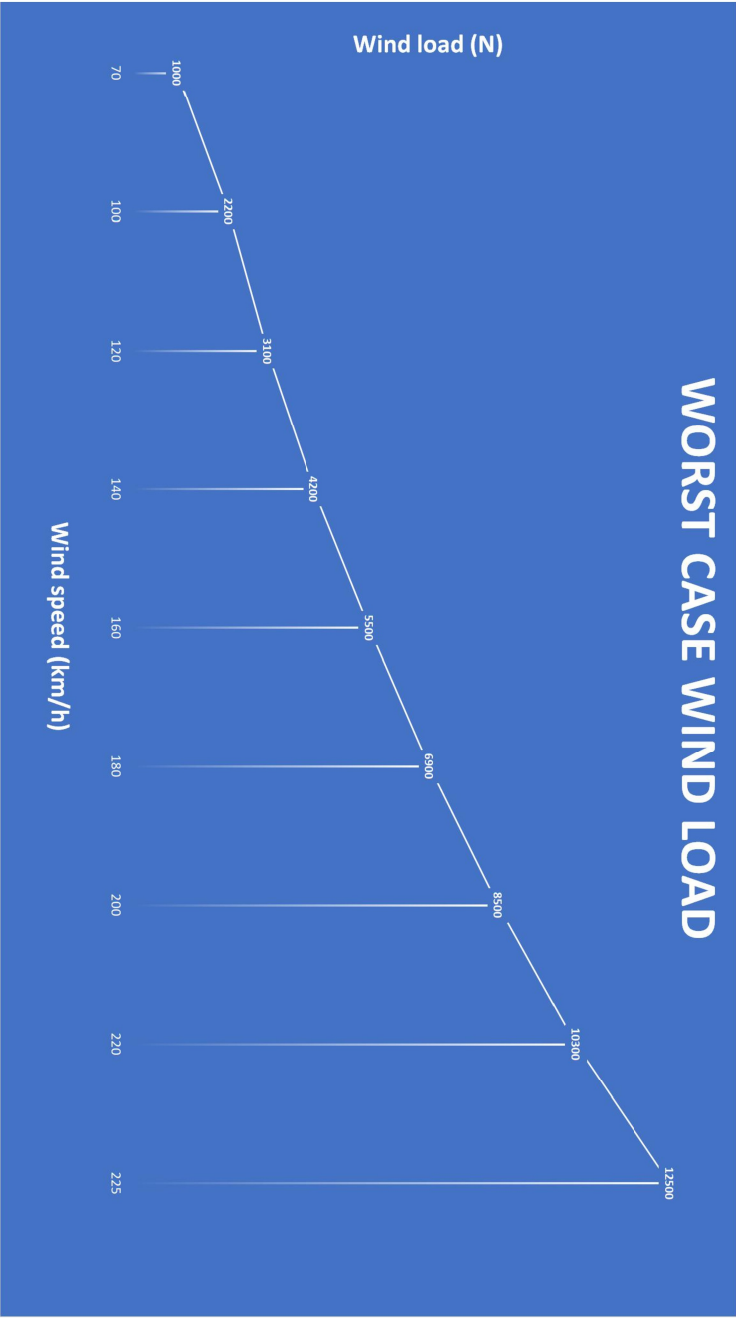
Dept.	Technical reference	Created by Adrelys	24/04/2024			Approved by
		Document type				Document status
		Title AGS3 Elevation footprint Dual antenna version				DWG No.
			Rev. 1	Date of issue	Sheet 7/12	



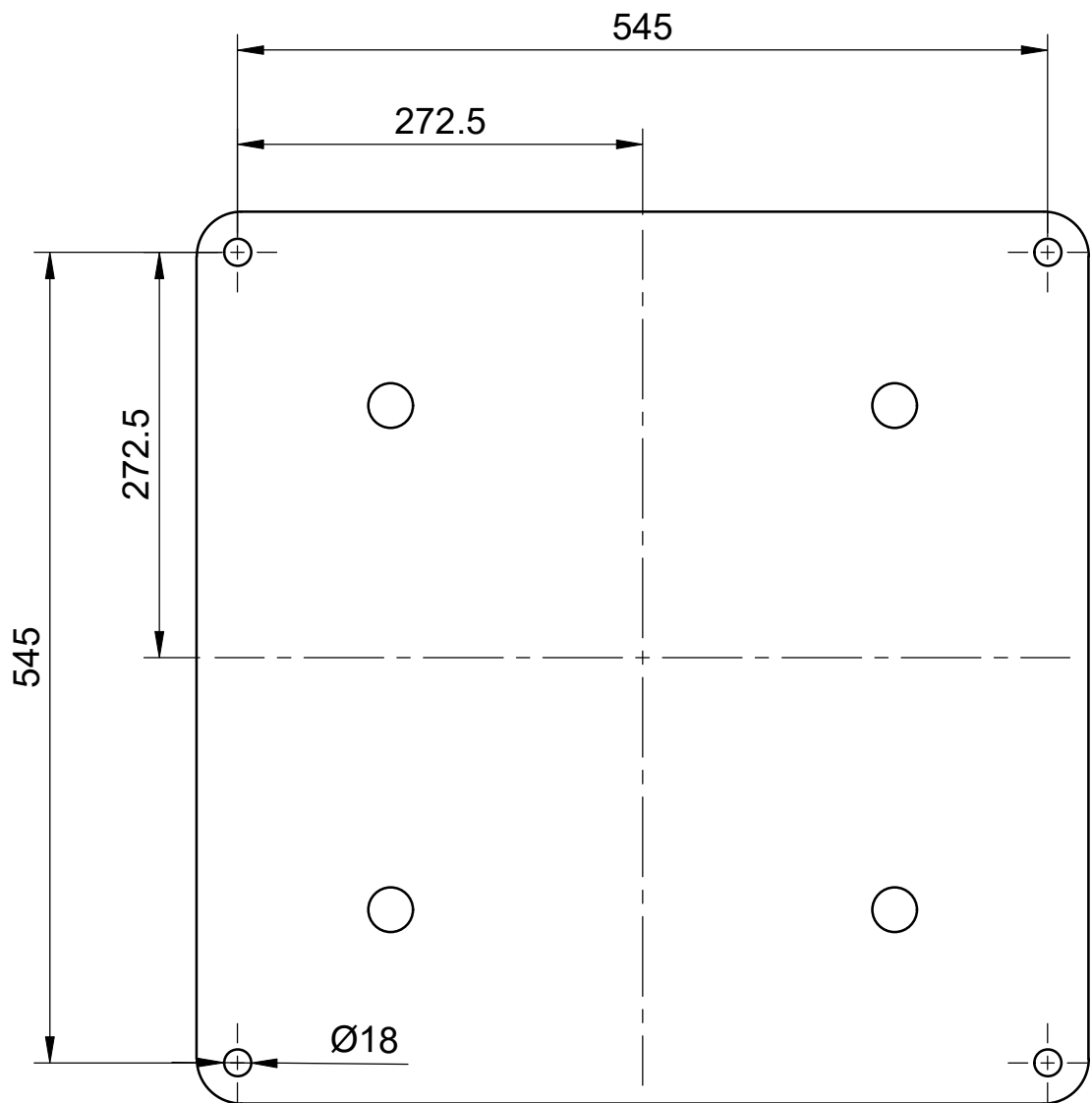
Dept.	Technical reference	Created by Adrelys	24/04/2024			Approved by		
		Document type			Document status			
		Title AGS3 Azimuth footprint Without UHF-VHF			DWG No.			
					Rev. 1	Date of issue		Sheet 8/12



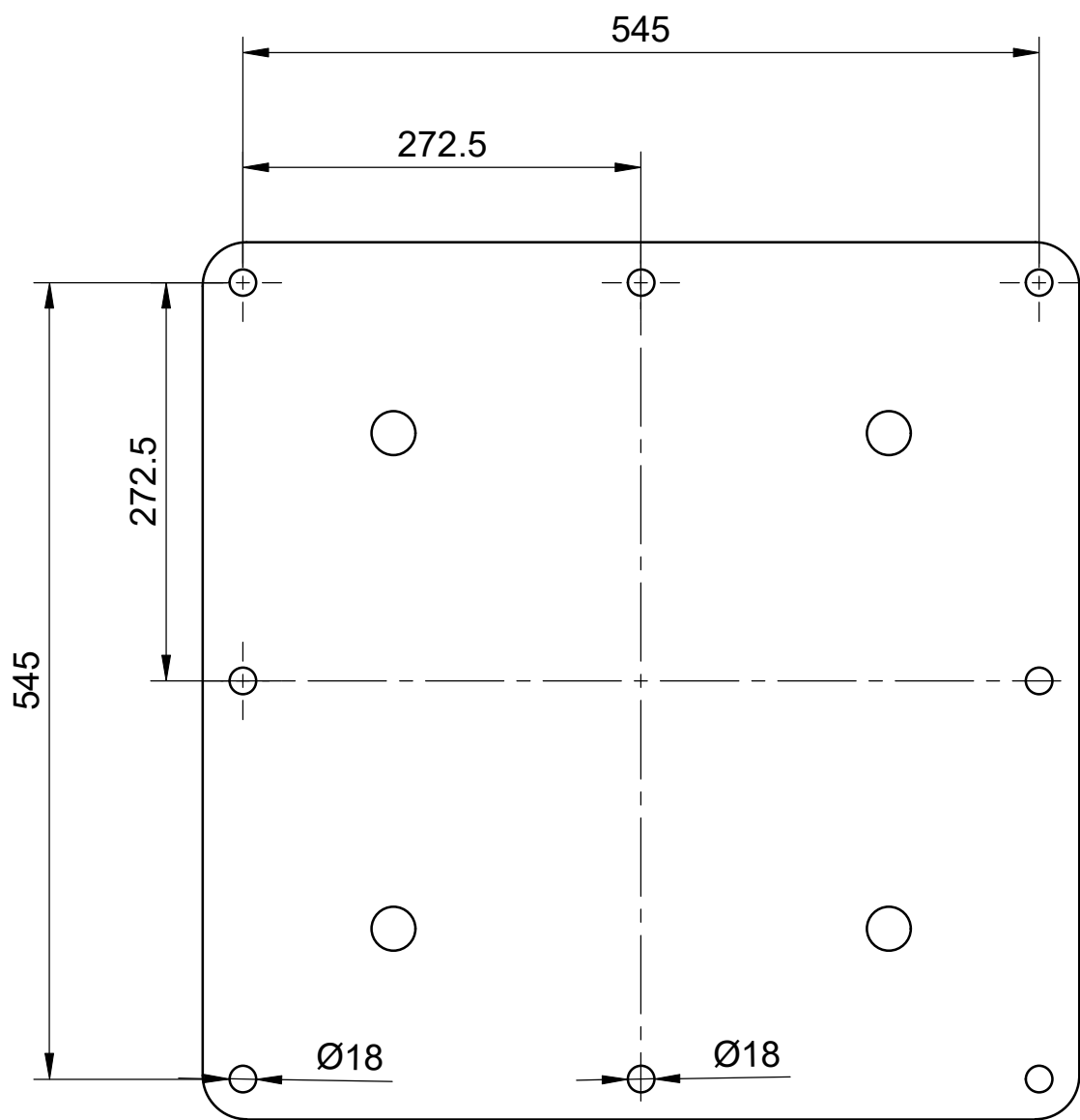
Dept.	Technical reference	Created by Adrelys	24/04/2024			Approved by
		Document type				Document status
		Title AGS3 Elevation footprint Without UHV-VHF				DWG No.
			Rev. 1	Date of issue	Sheet 9/12	



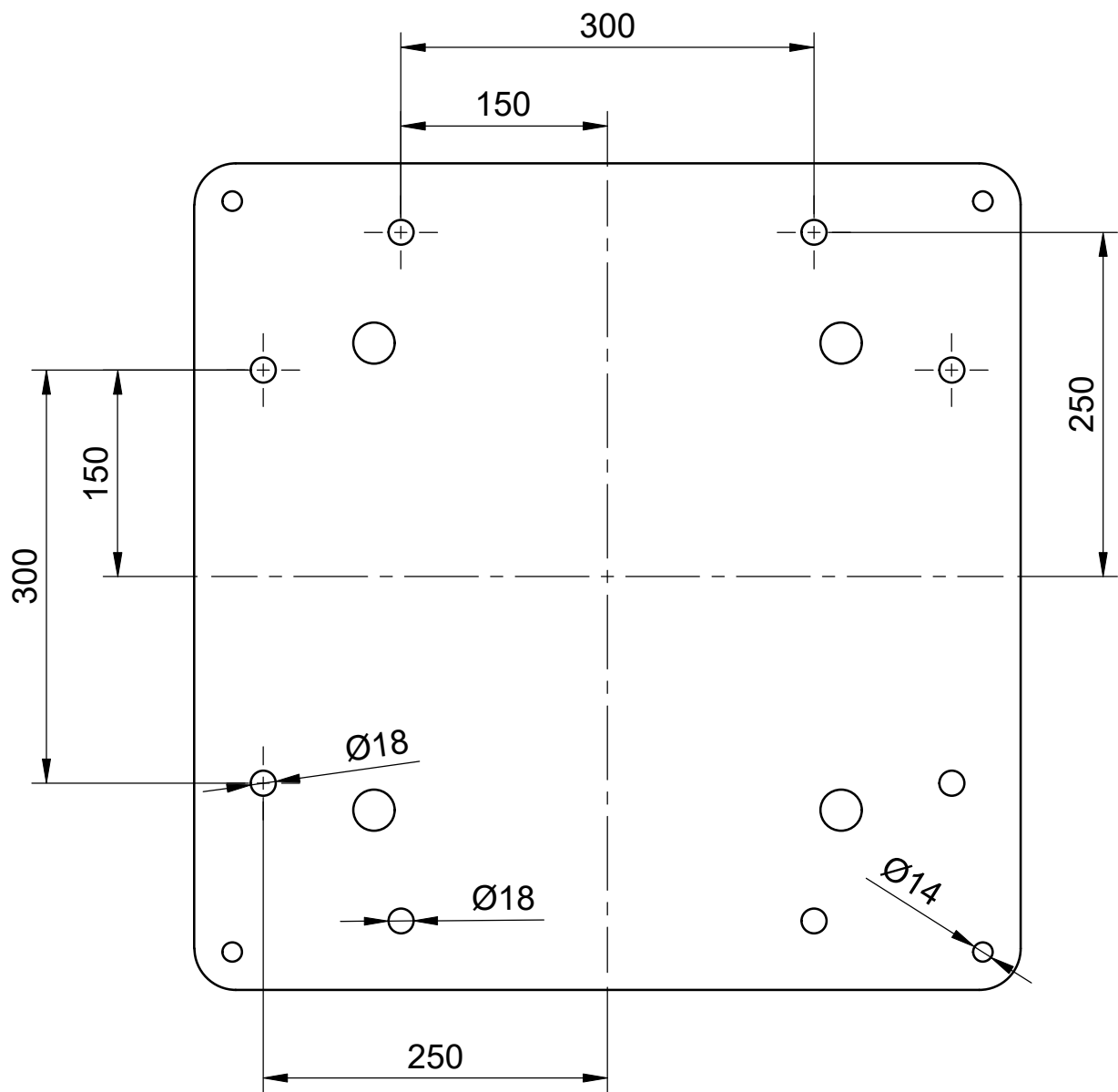
Dept.	Technical reference	Created by Adrelys	24/04/2024	Approved by
		Document type	Document status	
		Title AGS3 Wind load	DWG No.	
			Rev. 1	Date of issue 10/12



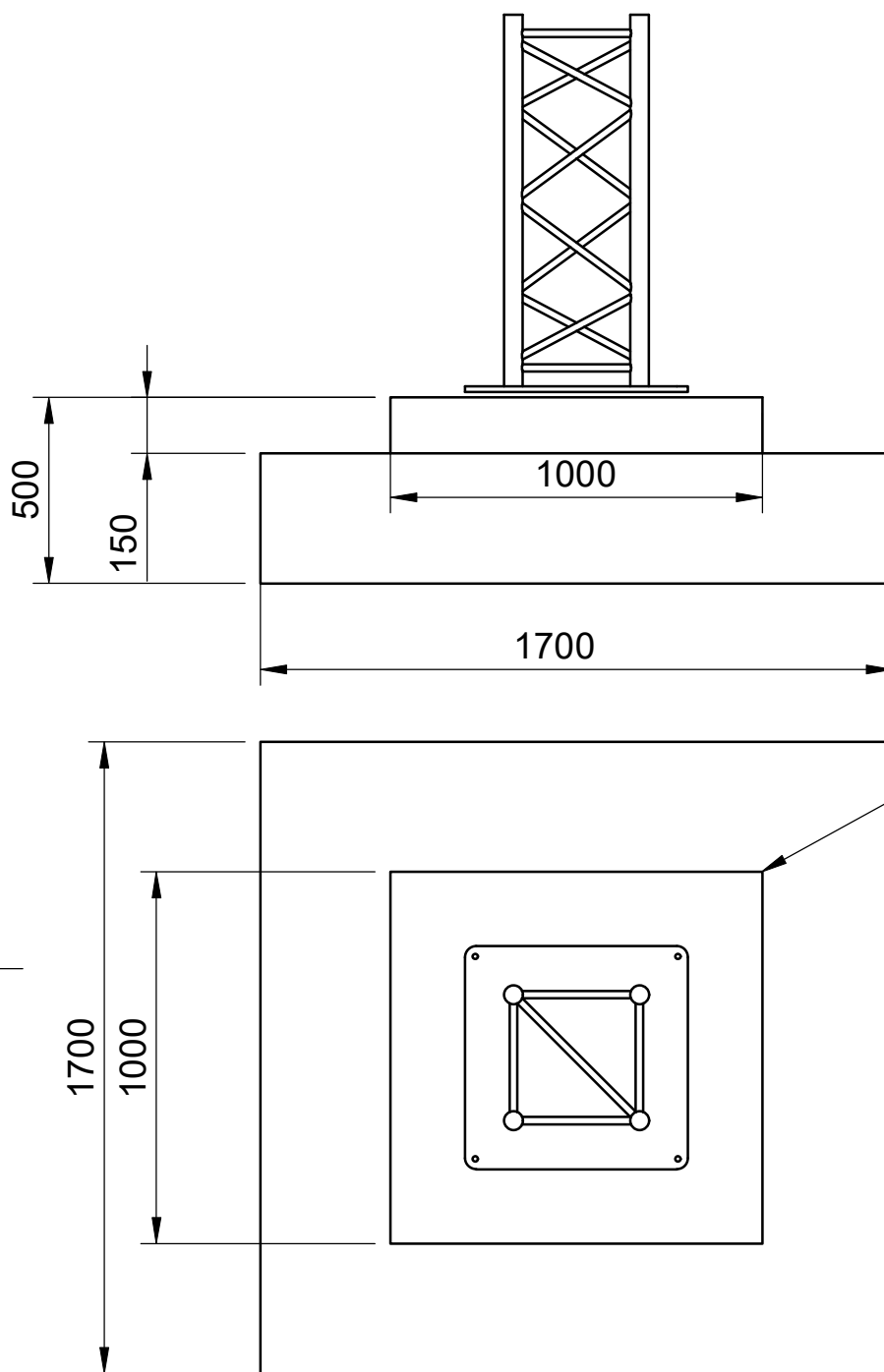
Dept.	Technical reference	Created by Adrelys	24/04/2024			Approved by		
		Document type			Document status			
		Title 4x18 EMLSP390			DWG No.			
					Rev.	Date of issue	Sheet 11/12	



Dept.	Technical reference	Created by Adrelys	24/04/2024			Approved by		
		Document type			Document status			
		Title 8x18 EMLSP390			DWG No.			
					Rev.	Date of issue	Sheet 11/12	



Dept.	Technical reference	Created by Adrelys	24/04/2024		Approved by
		Document type	Document status		
		Title 4x14 + 8x18 EMLSP390	DWG No.		
			Rev.	Date of issue	Sheet 11/12



Electrical (230V 6A) and network (fiber or copper) output should be outside of the ground plate footprint

Concrete pad example for wind loads of 120 km/h.
This example is for illustration only. A study must be done based on the specific soil and winds.

Dept.	Technical reference	Created by Adrelys	24/04/2024		Approved by
		Document type	Document status		
		Title AGS3 Concrete pad example	DWG No.		
			Rev. 1	Date of issue	Sheet 12/12